

GRC  
**Beton**

Ideal GRC...

...all you need set in concrete



We build complete facades with GRC



## **DESCRIPTION OF OUR POSSIBILITIES:**

GRC Beton Poland produces all GRC methods:

- pured / premix
- spray cast
- spray method
- mesh
- and combined

We can produce all GRC strength

**CLASSES: 18, 10, 8.**

We also produce prefabricated concrete and steel reinforced, both architectural and industrial, with any surface finish, and in any color scheme.

From the very beginning of our existence, we have developed GRC and SCC technologies by searching for new chemical mixtures and reinforcement variants.

We also design and produce molds for our projects.

## **RANGE OF ACTIVITIES:**

1. designing complete façades with substructure,
2. producing GRC and ordinary concrete components,
3. supplying complete constructions with fastening elements,
4. installing complete façades on objects.

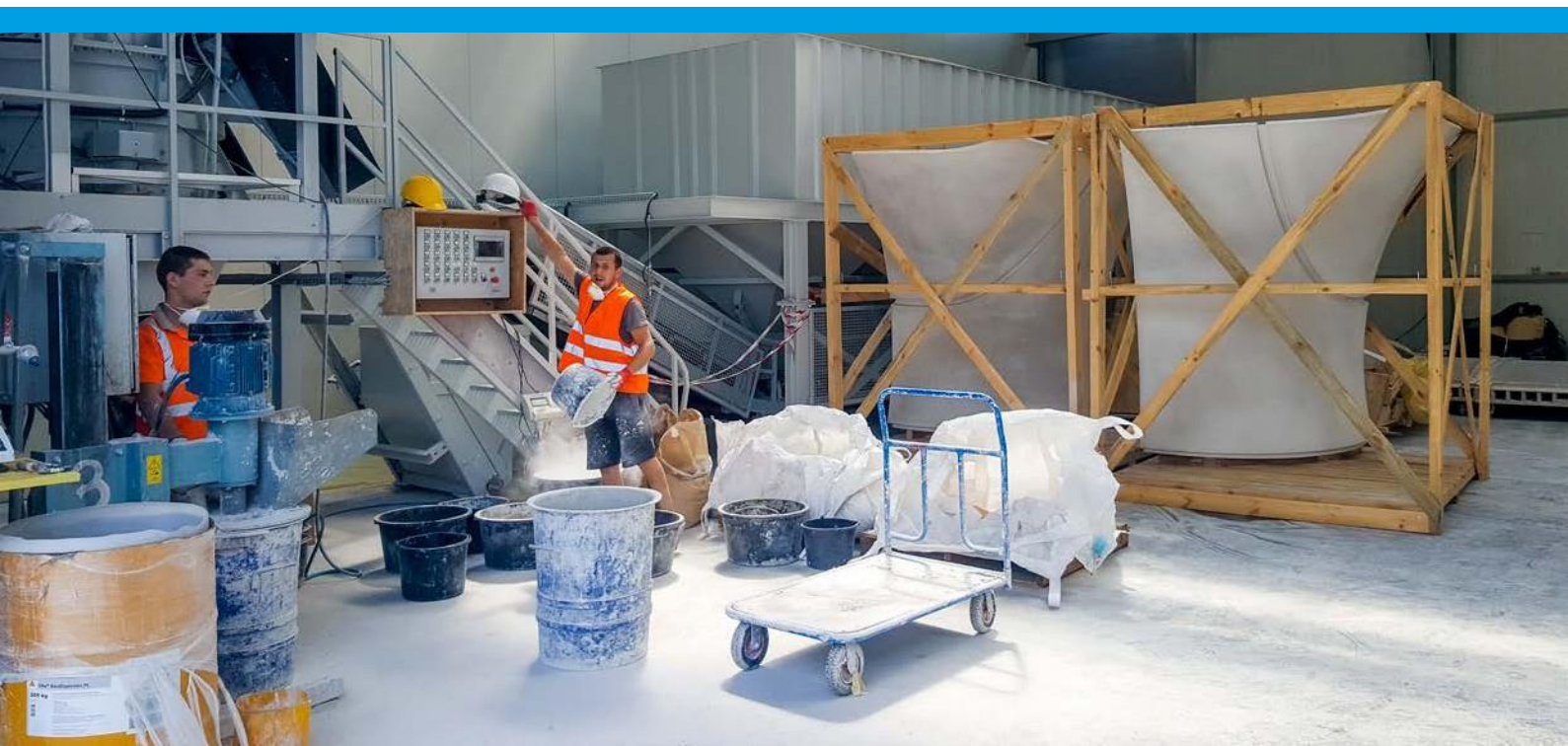
## **ADDITIONAL INFORMATIONS:**

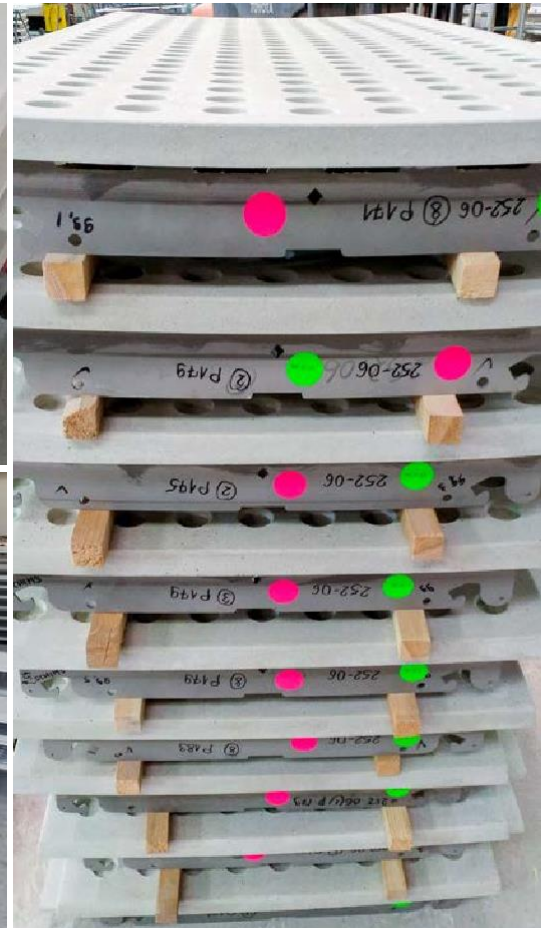
Our company has two production sites near Krakow where we can produce components for different projects at the same time. Our production capacity reaches a few thousand m<sup>2</sup>, and several thousand items per month.

**For the production of GRC / concrete mix we use a fully automated machine system.**

All the production materials are warehoused under roof what provides better quality conditions than the traditional model of prefabrication.

Production sites located outside the agglomeration center allow us to introduce more competitive prices.





## GRC BETON POLAND

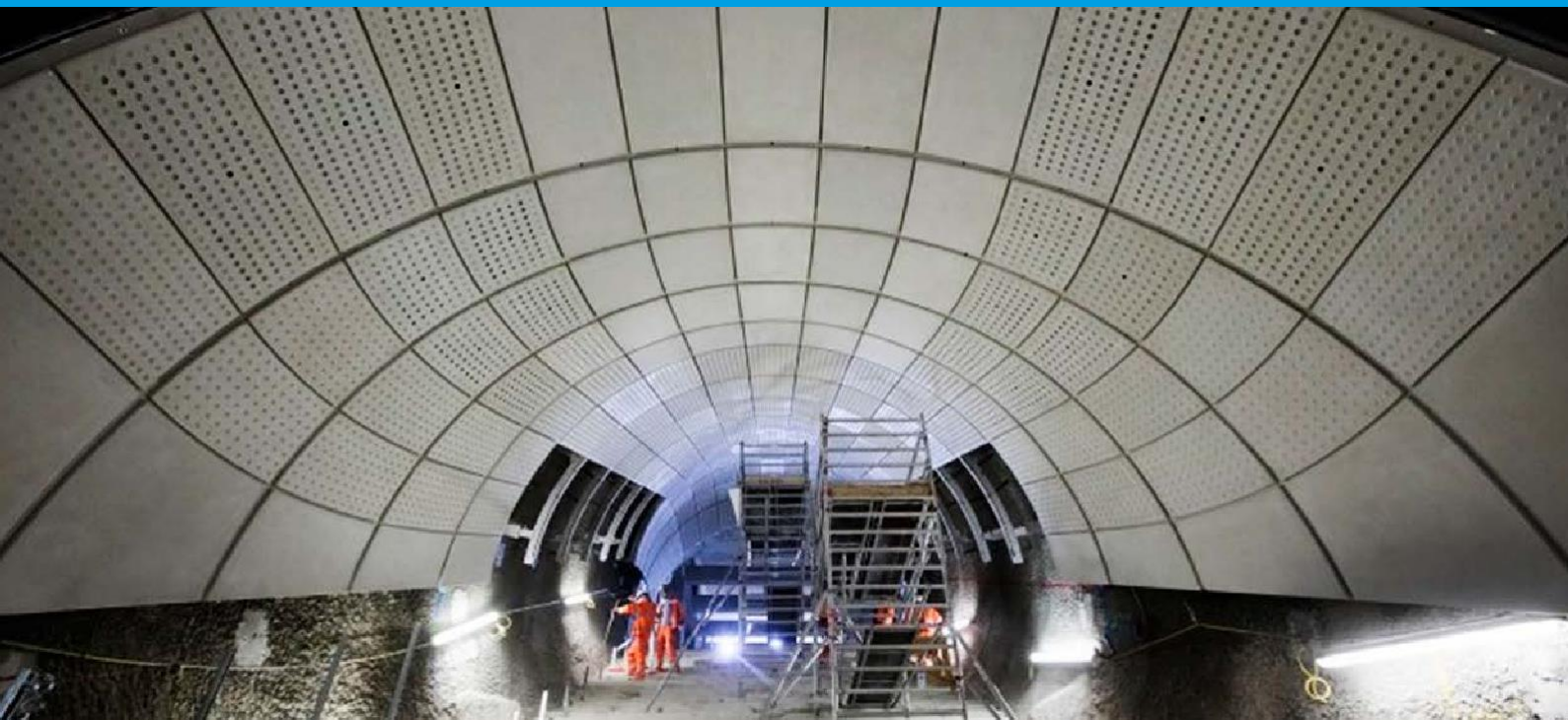
Last year, in October, we moved our factory to the new location - 2,500 m<sup>2</sup> heated production hall, which allows us to advance the development of GRC technology, and also produce up to 1,200 - 2,800 m<sup>2</sup> (flat 1.5 to 2.5 m<sup>2</sup>) GRC claddings per month. Located outside a major center agglomeration allows us to use more competitive prices.

We have warehouses all production materials "under roof" and 4 silos with a capacity of over 220 tons, which gives greater assurance of quality than the traditional model of prefabrication.

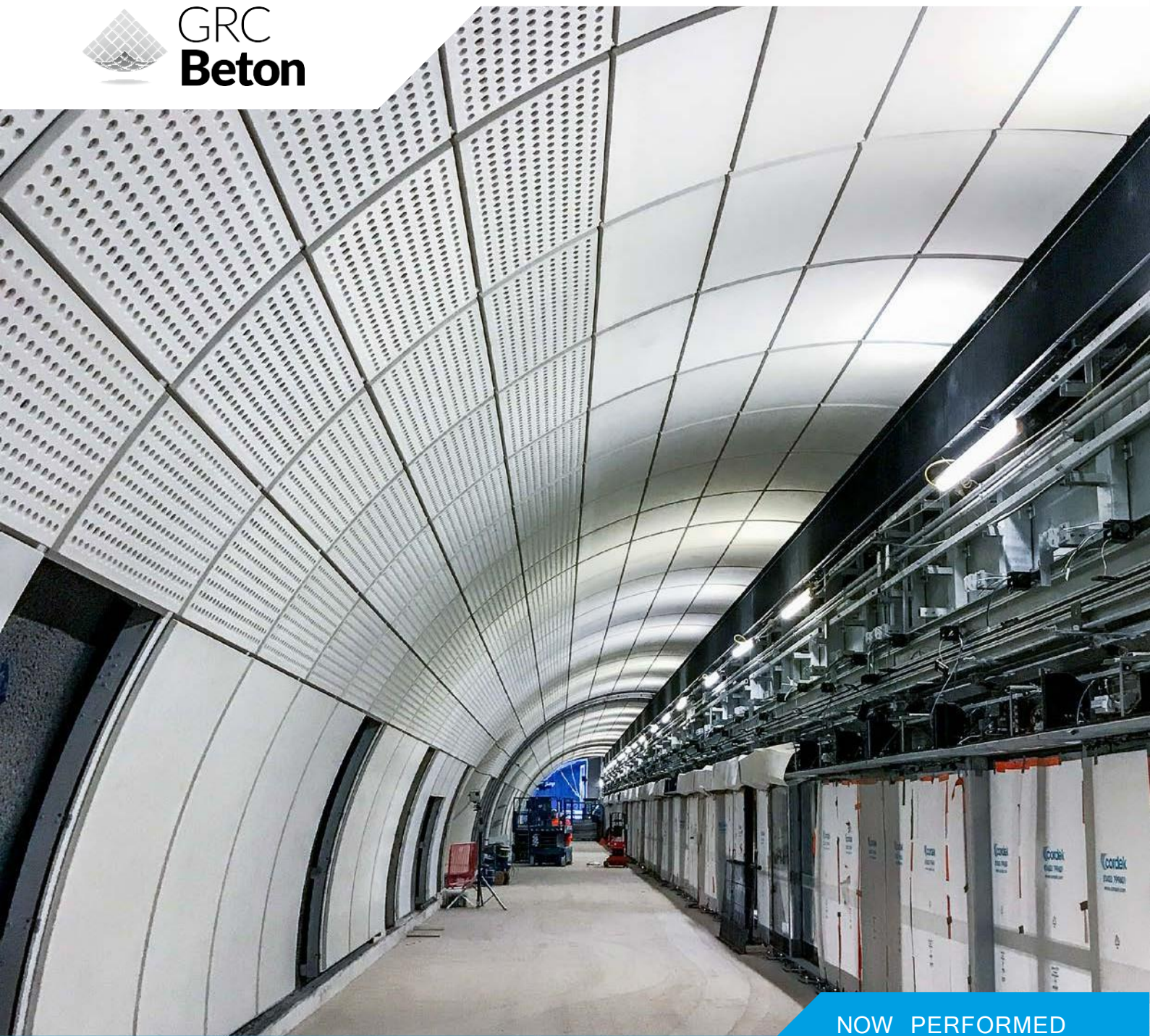
Since 2014 we have ISO 9001:2008; ISO 14001:2004; OHSAS 18001:2007 certification of our quality control system, ac. GRCA guidelines.

Below is a list of ventilated facades on the execution, built on the basis of our support structure (GS-system) and GRC cladding concrete, so flat and dimensional (3D) and architectural precast concrete.









NOW PERFORMED

## London, Bond Street station and Paddington Street station

**a.** Production combines precast elements / GRC elements with exposed aggregate, with sub construction (stainless steel)

**Range:** 9,500 GRC elements, façade area: 5,540 m<sup>2</sup>, 370 types

**Investor:** Crossrail Limited, 25 Canada Square, Canary Wharf, London, E14 5LQ

**Customer:** Lindner Group, Bahnhofstrasse 29, 94424 Arnstorf, Germany









NOW PERFORMED

## Kraków, “Serenada” MALL

- a. Production project
- b. Façade project
- c. Production combines precast elements:  
GRC elements with stainless steel reinforcement
- d. Production stainless steel sub construction
- e. Installation on site

**Range:** 128.000 GRC elements in 3.056 panels, façade area: 19.330 m<sup>2</sup>, 900 types

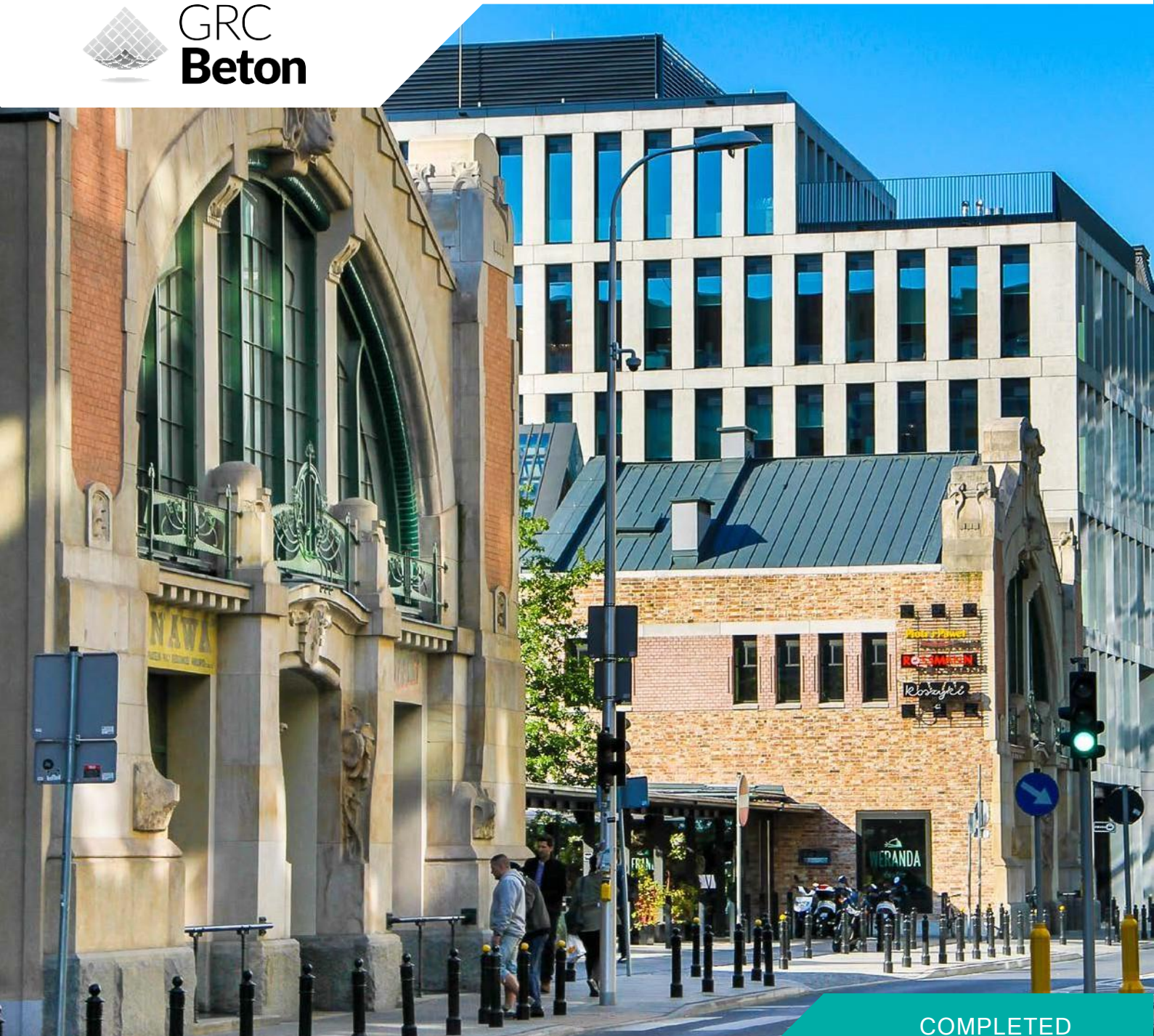
**Investor:** Serenada Sp. z o.o., ul. Puławska 427, 02-801 Warszawa

**Customer:** R D Bud Sp. z o.o., ul. Ryzowa 33b, 02-495 Warszawa









COMPLETED

## Hall baskets - office building in the Old Town center in Warsaw

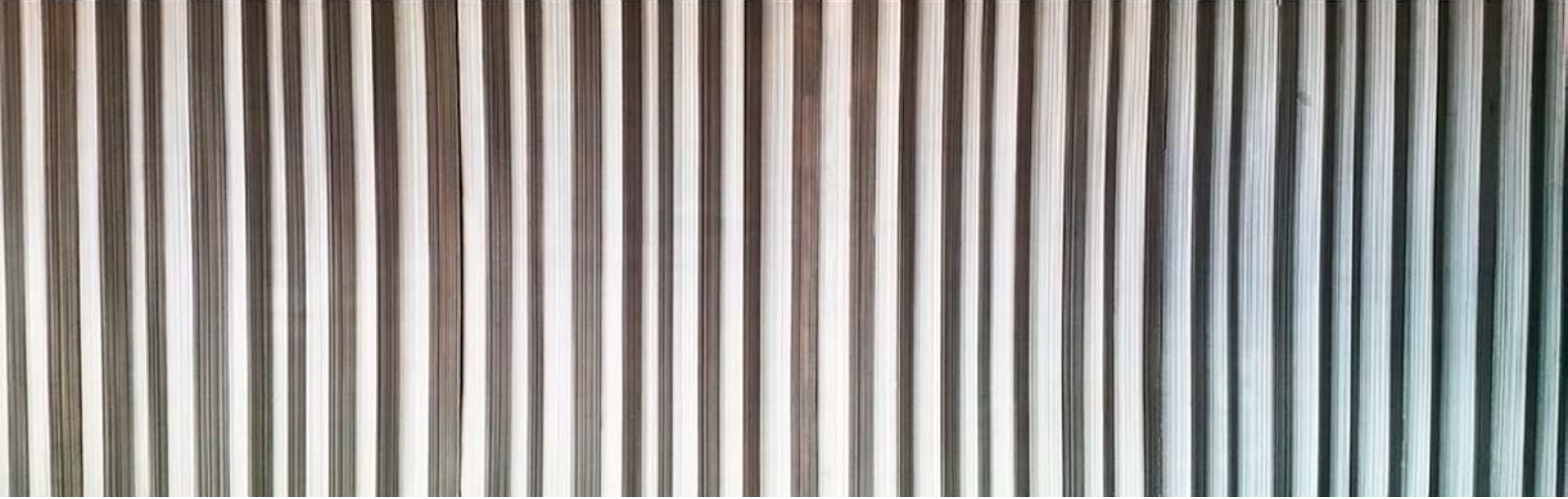
- a. Project precast elements
- b. Project sub construction (stainless steel)
- c. Production combines precast elements / GRC elements with exposed aggregate

**Range:** 1,950 precast / GRC elements, façade area: 5,040 m<sup>2</sup>, 119 types

**Investor:** Griffin Real Estate, Jana Christiana Szucha Alley 6, 00-582 Warsaw

**Customer:** ERBUD S.A., Puławska Street 300A, 02-819 Warsaw





COMPLETED

## International Conference Centre in Katowice: design and complete execution of

- a. Ventilated facades
- b. Acoustic claddings
- c. Landscaping elements (stairs, curbs, sills, etc.)

**Range:** approx. 9,400 pieces

**Client:** City of Katowice

**Purchaser:** Warbud S.A., Jerozolimskie Alley 162A, 02-342 Warszawa





COMPLETED

## Lower Silesia Route diametrical - tunnel in the center of Gliwice, complete façade

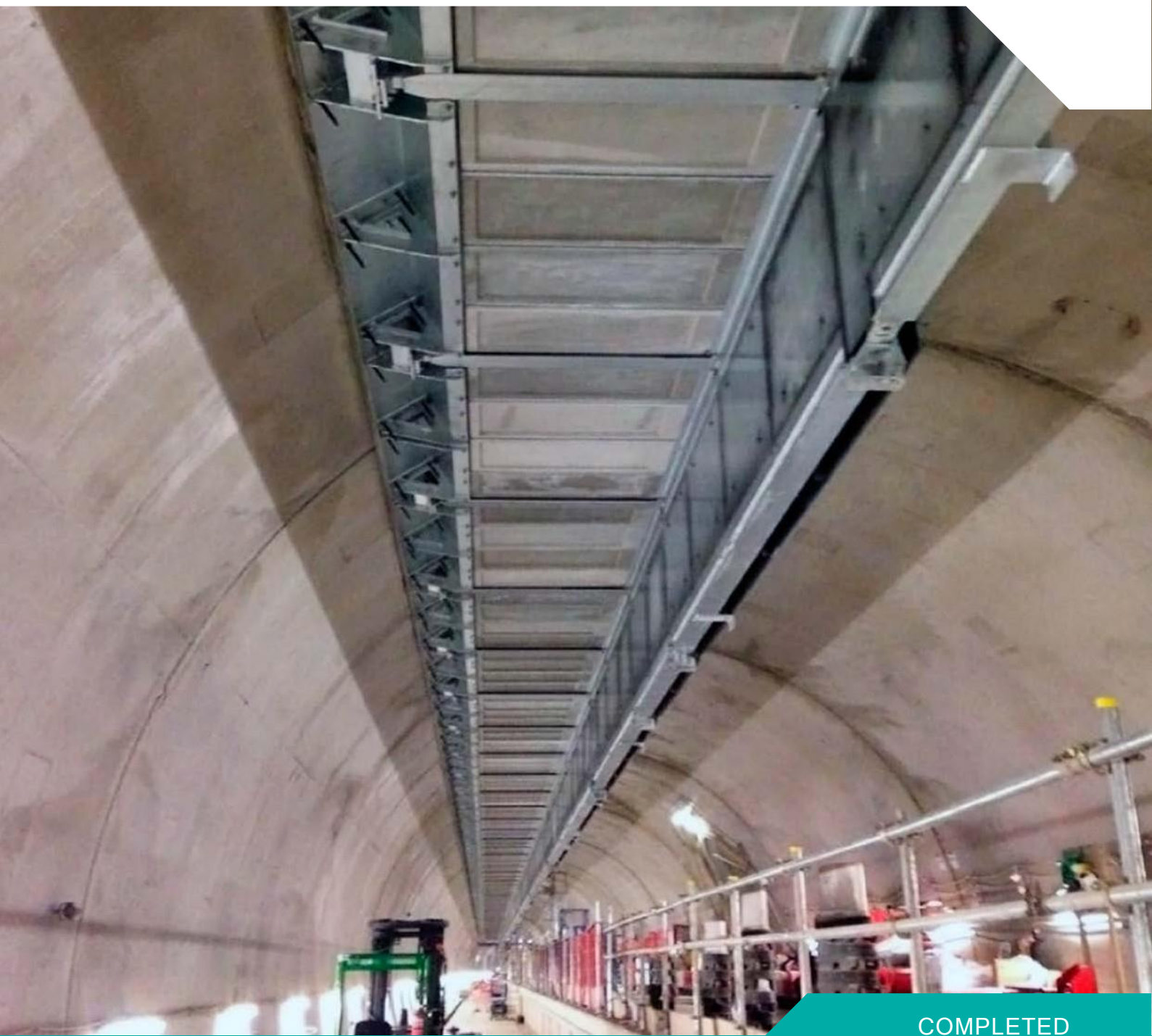
- a. Design of precast elements
- b. Design of sub construction (stainless steel)
- c. Production GRC elements
- d. Installation complete façade

**Area:** 8,070 m<sup>2</sup>

**Investor:** Gliwice city

**Customer:** Bilfinger Infrastructure S.A., Domaniewska 50A, 02-672 Warsaw





COMPLETED

## London, Farringdon Station, GFRC and precast panels (PES Structural Component Plenum Soffit, Precast Plank)

- a. Project precast elements / panels
- b. Production precast elements / panels

**Range:** 1,711 elements, 6 types

**Investor:** Crossrail Limited, 25 Canada Square, Canary Wharf, London, E14 5LQ

**Customer:** Lindner Isoliertechnik & Industrieservice GmbH





COMPLETED

## Łódź “Upper Route”: design and complete constr. of the façade (diaphragm walls) for GRC

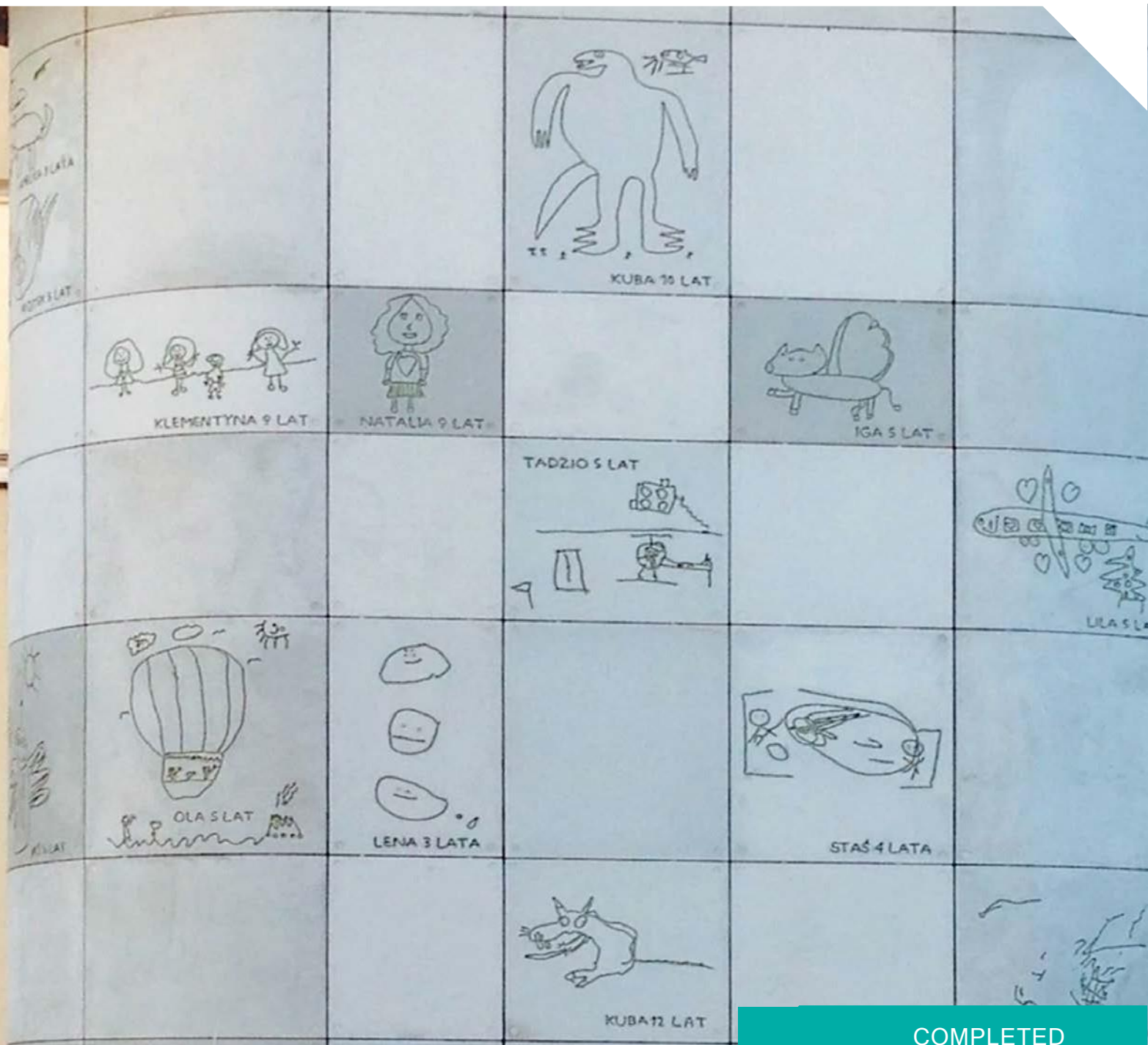
- a. Production of GRC Panels, and aluminum sub construction
- b. Project execution / workshop
- c. Complete incorporation

**Area:** 5,800 m<sup>2</sup>

**Investor:** Łódź city

**Customer:** Bridge Construction Companies “Mosty - Łódź” S.A.  
Bratysławska Street 52, 94-112 Łódź





## Children's Memorial Health Institute : design and complete constr. of the façade 3D for GRC panels

- Production of precast concrete and GRC and stainless steel sub construction
- Project execution / workshop
- Complete incorporation, to: ventilated facades, flat and 3D
- Concrete elements with children drawings, two-tone

**Range:** 114 different types of prefabricated elements

**Investor:** Warsaw Hospital for Children

**Customer:** Warbud S.A., Jerozolimskie Alley 162A, 02-342 Warsaw





## Developing complex of ski stations in Białka Tatrzańska

a. Production of GRC panels, to: Ventilated facades on objects of utility

**Area:** Approximately 540 m<sup>2</sup>

**Investor:** Lower Cable Train Station "Remiaszów" - Kotelnica in Białka Tatrzańska

**Customer:** Stramont Sp. z o.o., Szara Street 14/38, 00-420 Warsaw



# Contact

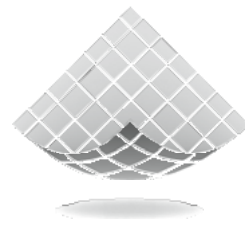
## Headquarter:

32-085 Krzeszowice, ul. Krakowska 31/218

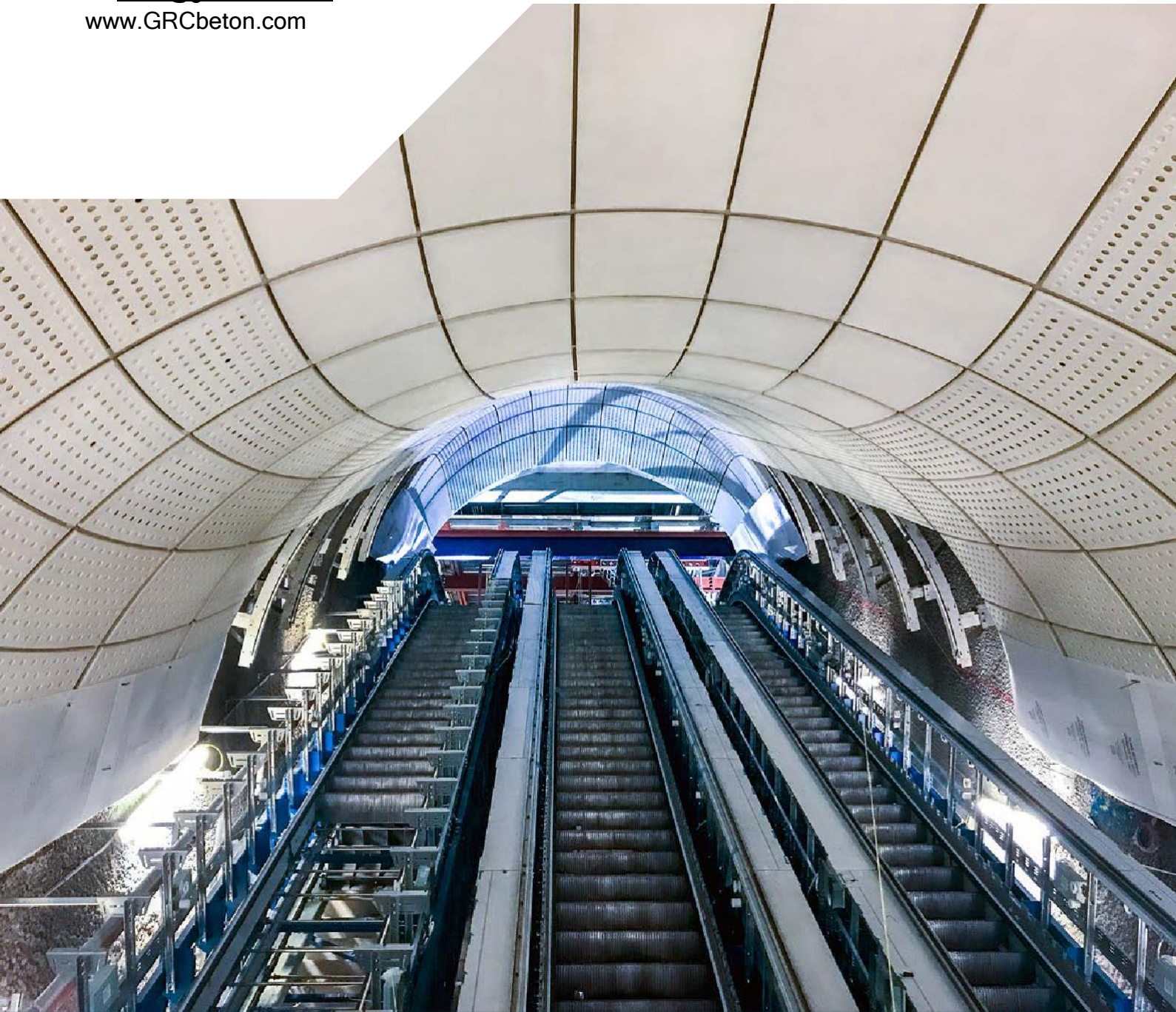
M.: + 48 720 460 308

E.: [biuro@grcbeton.com](mailto:biuro@grcbeton.com), .:

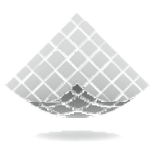
[www.GRCbeton.com](http://www.GRCbeton.com)



# GRC Beton



We have produced around 172,000 GRC and concrete components during our activity



# GRC Beton



GRCA  
INTERNATIONAL  
MEMBER



ISO 9001  
LL-C (Certification)



ISO 14001  
LL-C (Certification)



OHSAS 18001:2007  
LL-C (Certification)

**We operate in accordance with the requirements of quality control systems:**

ISO 9001:2008; ISO 14001:2004; OHSAS 18001:2007

We belong to GRCA (The worldwide association of manufacturers GFRC)